



AXM-NET2 Module Firmware Update Instruction Manual

1. Overview

This document provides detailed, step-by-step instructions for updating the firmware of the AXM-NET2 communication module and the Acuvim II V3 meter. To ensure system stability and access the latest features, it is recommended to keep your device firmware up to date.

IMPORTANT: *Firmware updates CANNOT be performed through the AXM-NET2 web interface. You must use the AcuView2 PC tool provided by Accuenergy.*

2. Preparation and Requirements

Before starting the update process, please ensure you have the following:

- **AcuView2 Software:** The latest version installed on a Windows PC.
- **Firmware File:** The correct firmware file provided by Accuenergy.
- **Connectivity:** A stable connection between the PC and the module via Ethernet (Modbus TCP).

3. Firmware Update via Modbus TCP (Ethernet)

This is the preferred method when the module is already connected to a local area network.

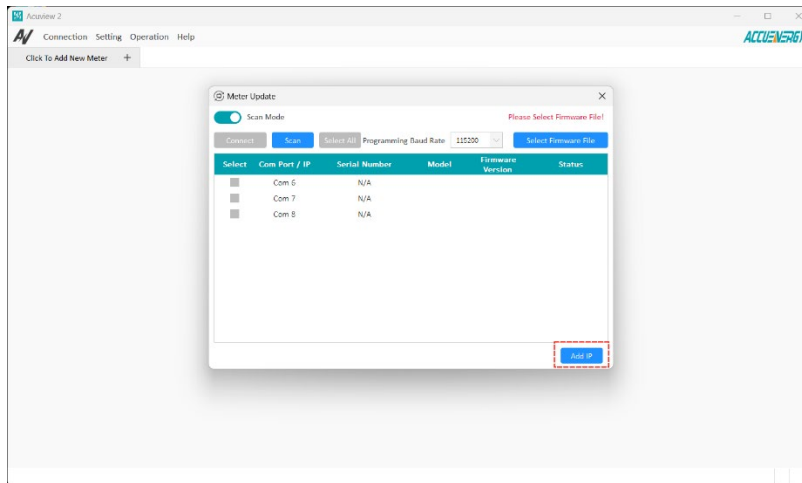
Step 1: Access the Update Interface

Launch AcuView2. In the top navigation bar, click on **Operation** and select **Firmware**

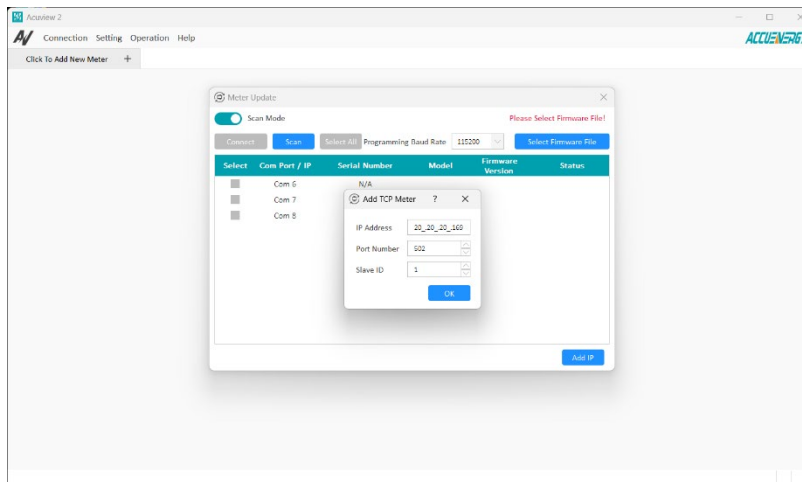
Update... from the dropdown menu. This will open the "Meter Update" utility window.

Step 2: Add the Device IP Address

- Click the **Add IP** button located at the bottom right of the utility.



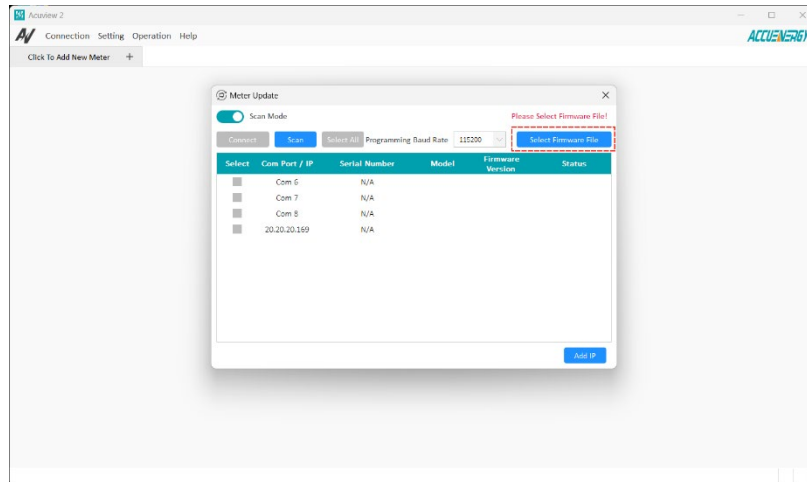
- In the "Add TCP Meter" dialog, enter the IPv4 Address of your AXM-NET2 module.



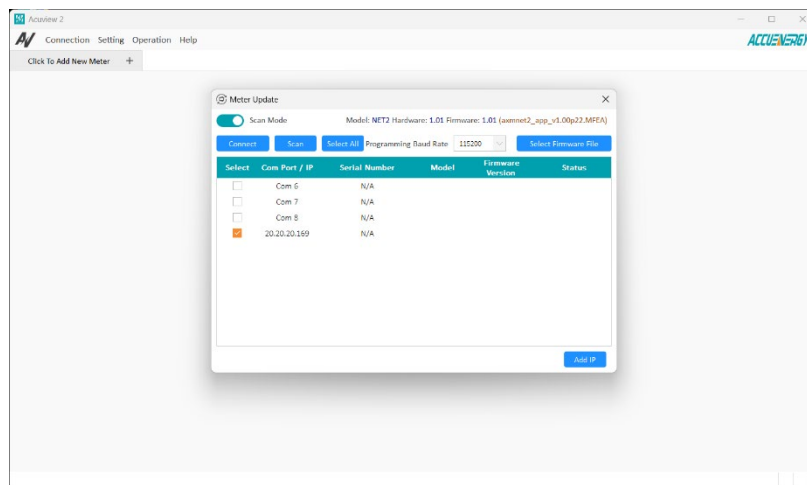
- Ensure the Port is set to 502 (default) and the Slave ID matches your device setting (default is 1).
- Click **OK** to add the device to the scan list.

Step 3: Load the Firmware File

Click the **Select Firmware File** button.

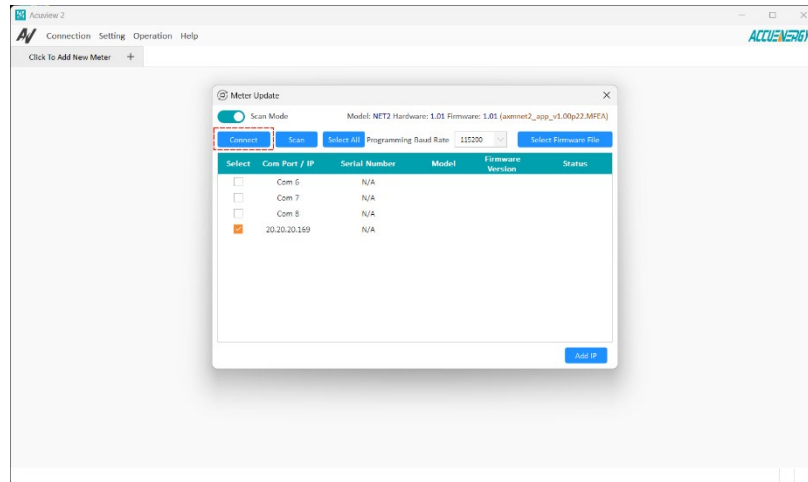


Browse your computer to locate the firmware file provided for the update. The file name and path will be displayed at the top of the window once successfully loaded.

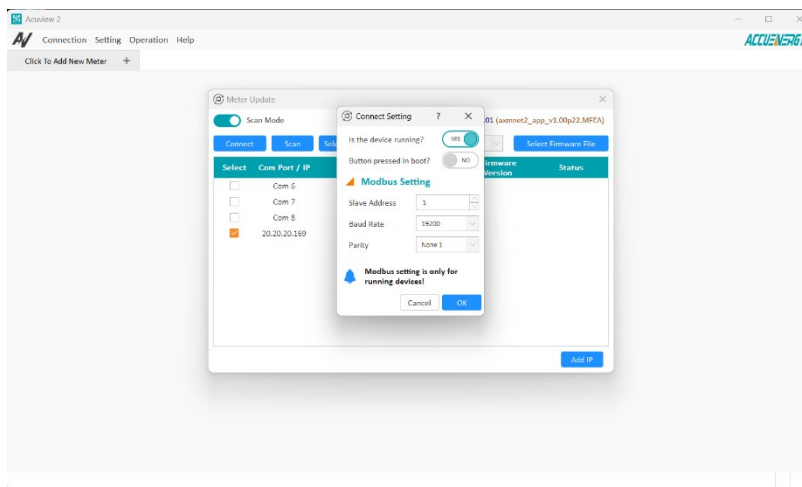


Step 4: Establish Connection

- In the device list, check the box under the **Select** column for the IP address you just added.

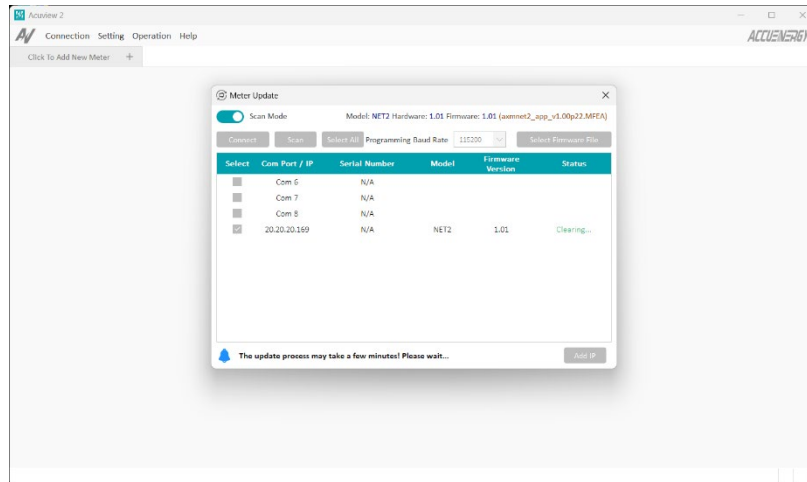


- Click the **Connect** button.
- A "Connect Setting" dialog will appear. For Modbus TCP updates, configure as follows:
- Is the device running?: Set to **YES**.
- Button pressed in boot?: Set to **NO**.
- Verify the Modbus Settings (Slave Address, etc.) and click **OK**.

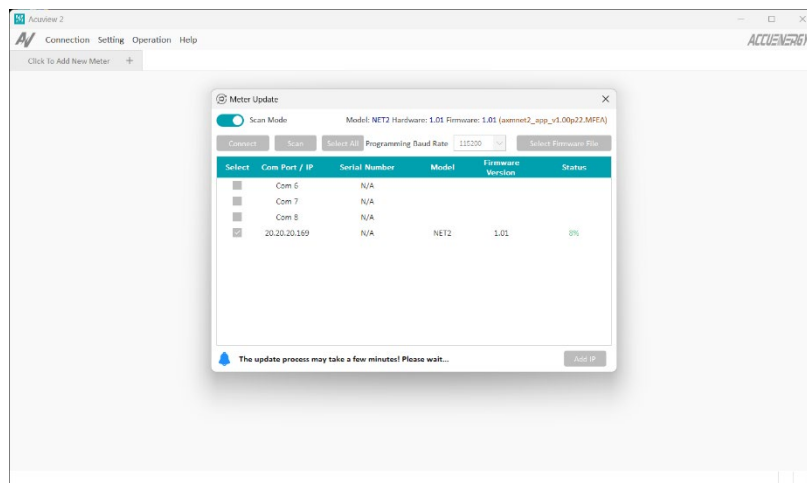


Step 5: Execution and Completion

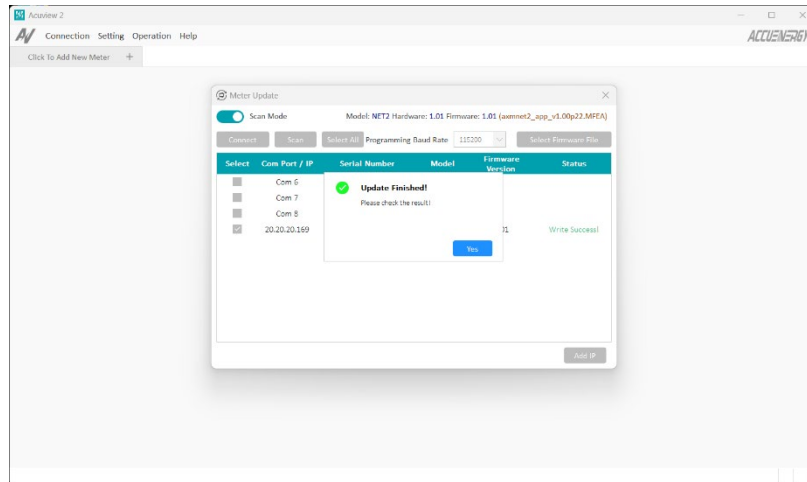
The system will begin the update. The status will initially show "**Clearing...**" as it prepares the module's memory.



A percentage progress bar will track the upload. Do not interrupt power or network connectivity during this phase.



When the progress reaches 100%, a pop-up will state "**Update Finished!**". The status column will display "**Write Success!**".



Click **Yes** to close the prompt and finalize the update.

Note: After a successful firmware update, it is recommended to power cycle the device and verify the new firmware version in the AcuView2 device info or the module's web interface (read-only).